

## Moving Data Files from Previous Versions of ExamView into ExamView 8.1 and later

Previous versions of the ExamView Assessment Suite software installed to an ExamView folder in the root of your hard drive. However, ExamView version 8.1 (and later) installers follow the software industry install path and install into the Program Files\elInstruction\ folder on the PC and the Applications\elInstruction\ folder on the MAC. Thus, if you have an earlier version of ExamView on your computer and you install ExamView version 8.1 (and later), the application and data files will install to a different location than your previous titles. The following instructions will guide you on how to move your data files (banks, tests, and classes) to the new location.

Step 1: Locate your previous version of ExamView on your hard drive.

- PC: C:\ExamView
- MAC: HD:\ExamView Pro
  
- Note that the path could be different than above if the default install path was not used.

Step 2: Move your banks from the previous version of ExamView to the new location.

- Highlight the folders containing the banks you want to move and cut them.
- Navigate to the Banks folder and paste them into the location below.
  - PC: C:\Program Files\elInstruction\ExamView\Banks  
\* This might actually be C:\Program Files (x86)\elInstruction\ExamView\Banks
  - MAC: HD:\Applications\elInstruction\ExamView\Banks

Step 3: Move your tests from the previous version of ExamView to the new location.

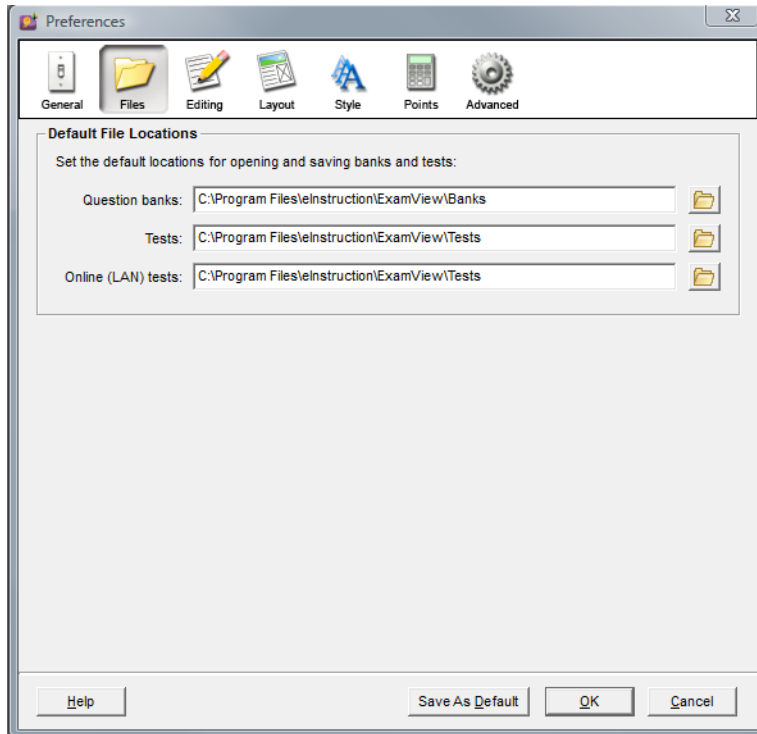
- Highlight the folders containing the test you want to move and cut them.
- Navigate to the Test folder and paste them into the location below.
  - PC: C:\Program Files\elInstruction\ExamView\Test
  - MAC: HD:\Applications\elInstruction\ExamView\Test

Step 4: Move your class rosters from the previous version of ExamView to the new location.

- Highlight the class rosters you want to move and cut them.
- Navigate to the Classes folder and paste them into the location below.
  - PC: C:\Program Files\elInstruction\ExamView\Classes
  - MAC: HD:\Applications\elInstruction\ExamView\Classes

Step 4: Reset the default locations for opening and saving banks and tests.

- Open the ExamView Test Generator, go to the Edit menu, and choose Preferences.
- Choose the Files tab and use the folder icons on the right to set your defaults to the proper locations.



**Note:** On the MAC your location would show Applications where the above screen capture indicates Program Files.